



Installation and Navigation

Installation:

This part of the guide has been put together to familiarise you with the screens that will appear during the installation process. The Shire Systems Support team is on hand to guide you through this process should you prefer. The Support Team operate during the core business hours of 9am to 5pm, Monday to Friday (excluding Bank holidays). Please call **023 8023 0656** to speak to one of our technical team.

Please insert the CD into your CD ROM Drive. If you have **AutoRun** enabled, the “System Guide” menu will launch. To install the software select “System Setup” and the following menu screen should appear. (See Fig. 1)

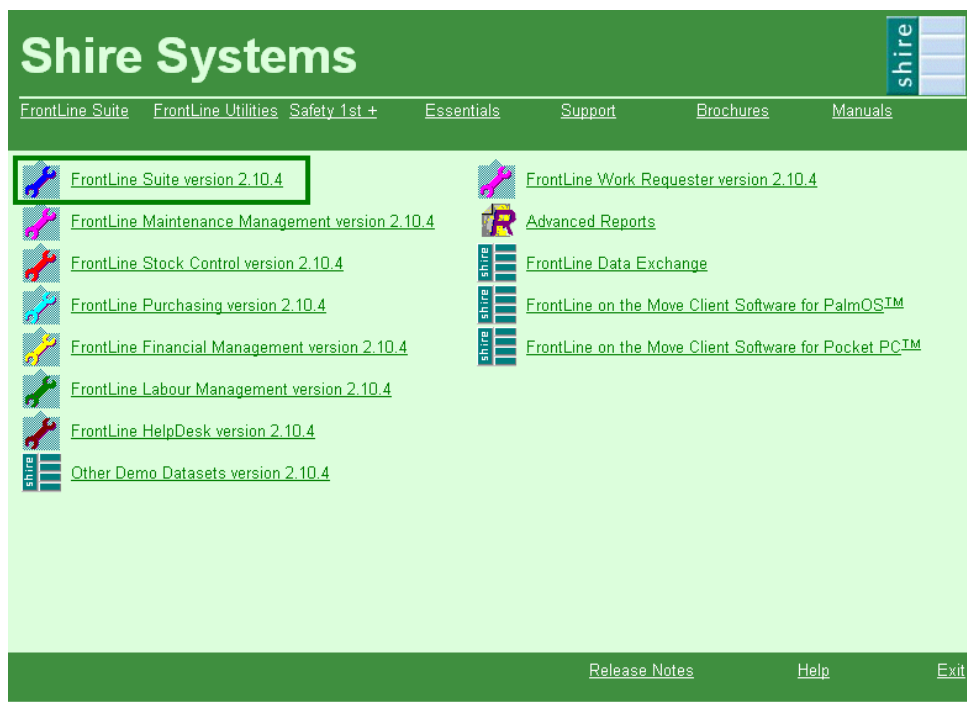


Fig 1.

If you do not have **AutoRun** enabled, it will be necessary to run the set-up file directly from the disk. To do this: select **Start and Run** from your desktop and select the file **d:\setup.exe** (or the appropriate drive letter for your PC).

Next, **click** on the module/s that you may wish to individually install or by clicking on **FrontLine Suite** you will install all of the main FrontLine modules in one process. (See Fig. 1)



The following information screen now appears. (See Fig. 2)

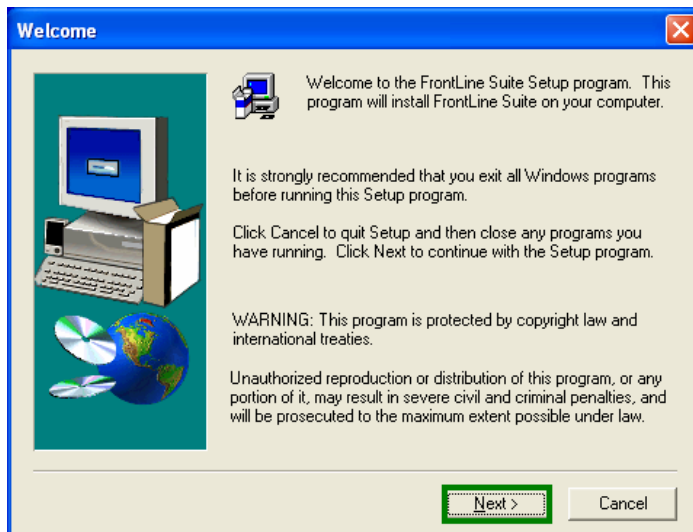


Fig 2

Click Next to continue (See Fig. 2)

From this screen (Fig. 3) you can select the modules/products that you wish to install, also the destination folder for the application (via the **Browse** button). The default is set to **C:\Program Files\Shire Software**. (See Fig. 3)

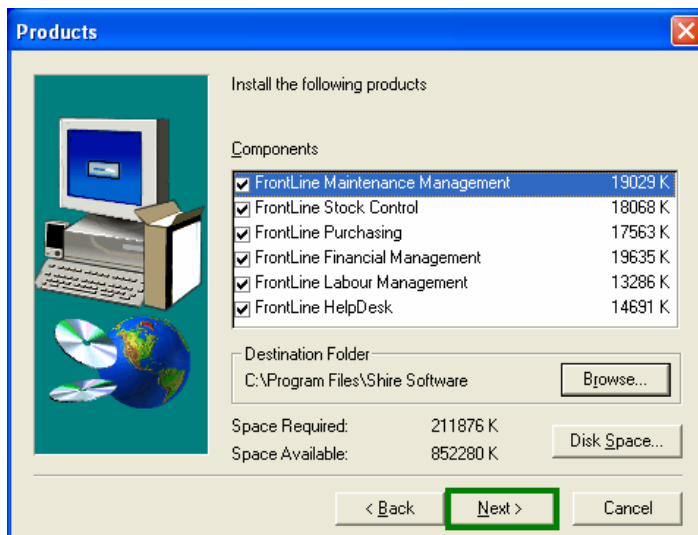


Fig 3

Click Next to continue.

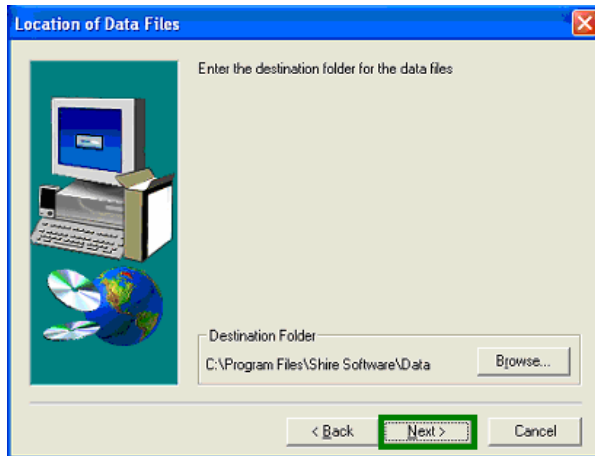


Fig. 4

In this screen, you are able to set the destination folder where you want to store the data files. The default is set to the local drive of the PC: **C:\Program Files\Shire Software\Data**. For the purpose of evaluating the software, this may well be adequate but if you are inputting data that you may want to keep in the long term, you are advised to consider storing the data in a folder on a network drive that is automatically backed up. (See Fig. 4)

Click Next to continue

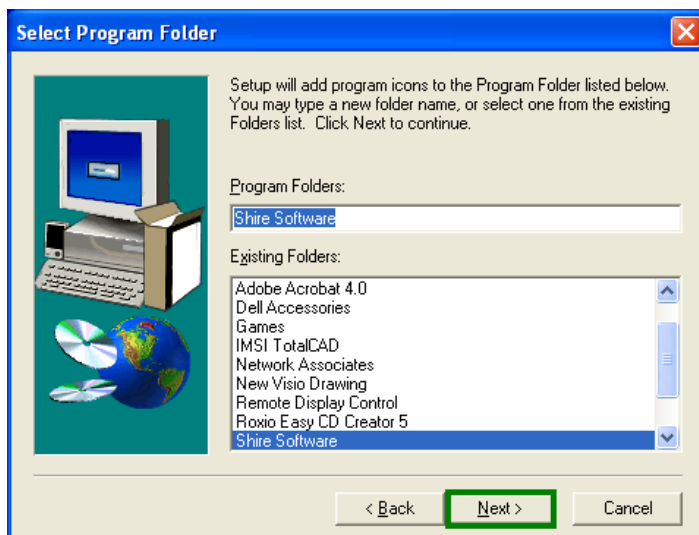


Fig 5

Enter the name of the Folder to be added to the Windows Start Menu the default is already set to **Shire Software**. (See Fig. 5)

Click Next to continue

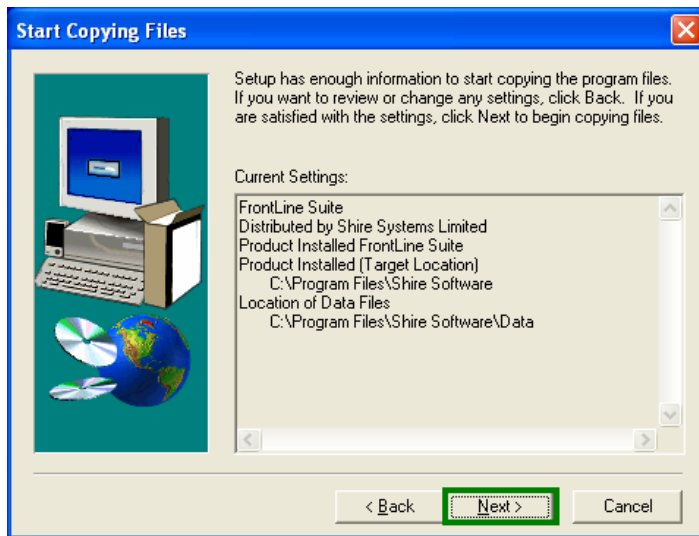


Fig. 6

This screen shows the details of what is about to be installed. **Click Next** the files are then copied across and the “installation progress” bar is displayed. (See Fig. 6)

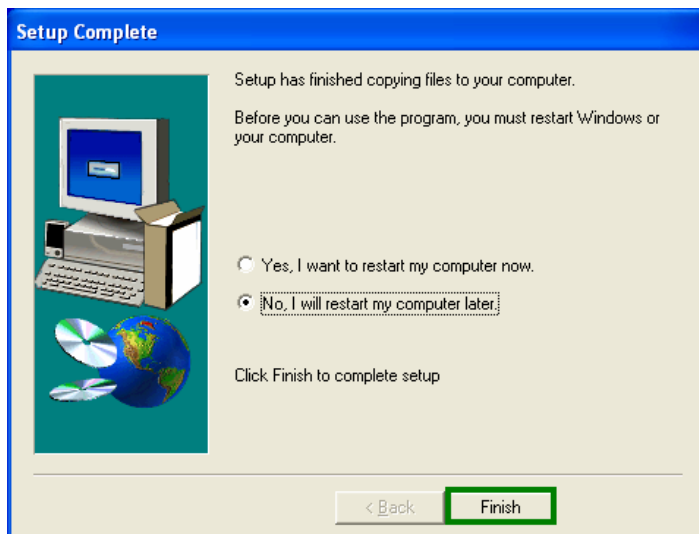



Fig. 7

Click Finish (See Fig. 7).



Navigation:

 After installing the application, **double click** on the **Maintenance Module** icon on your desktop. When this screen appears **click** on the **Evaluation** button. (See Fig. 8)

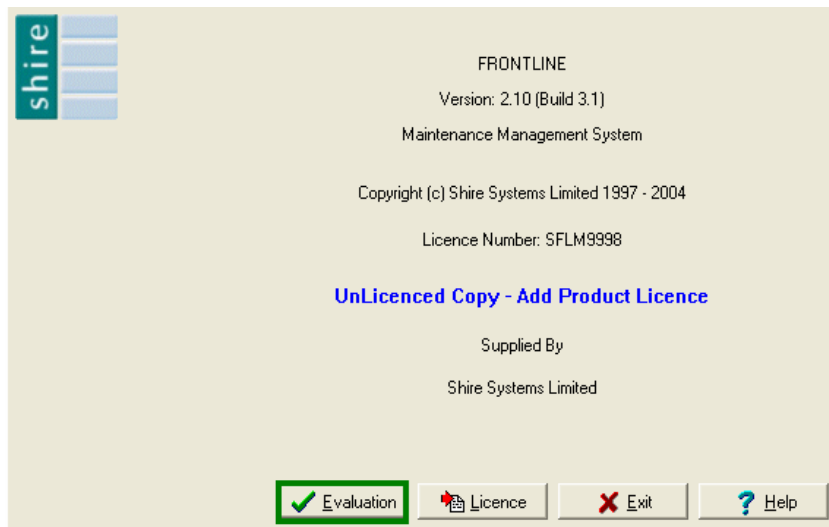


Fig. 8

This screen gives you the option to put in your own company details, this information is optional but is used elsewhere within the system (See Fig. 9). Click **Next** to continue.

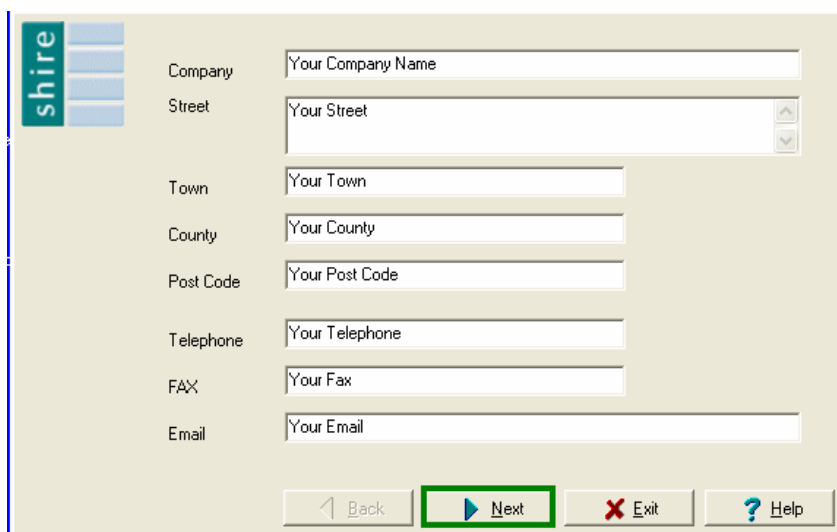


Fig. 9



There are two selectable databases on the CD evaluation.

Demo Data is a pre-populated database that is ideal for initially getting to grips with the system.

Live Data is an empty database that can be populated with your data during/after the evaluation period. (See Fig. 10)

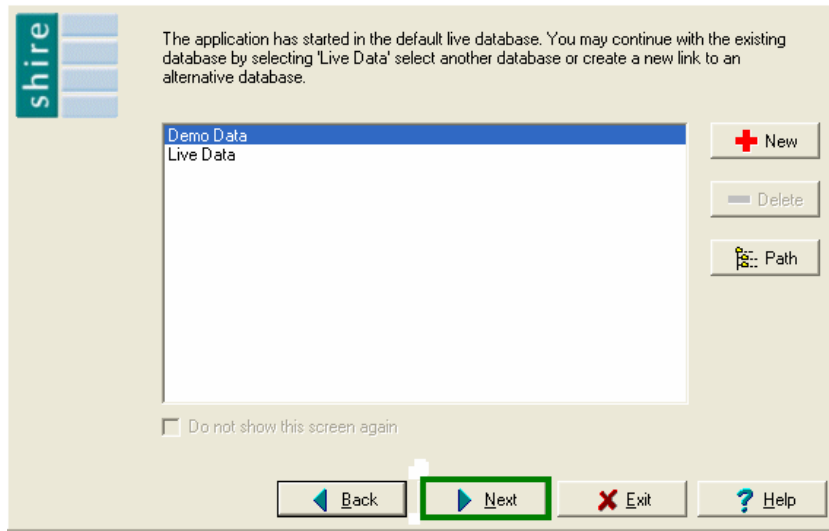


Fig 10

After highlighting the appropriate database **click** the **Next** button to continue. (See Fig. 10)

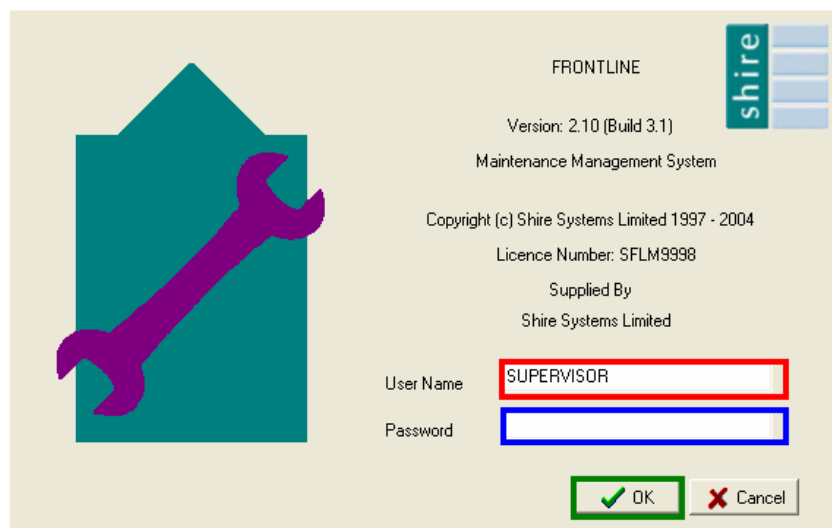


Fig. 11

For the purpose of evaluating the software use **SUPERVISOR** as the **User Name** and the **Password** field left **BLANK** as shown. **Click** on the **OK** button to proceed. (See Fig. 11)

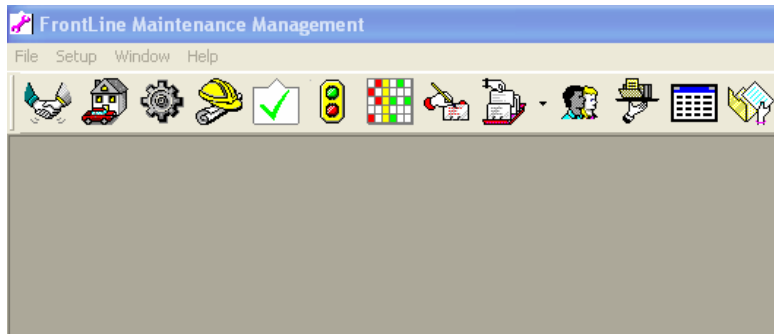


Fig 12

The system will open displaying the toolbar icons. (See Fig. 12)

GENERAL WINDOWS FUNCTIONS IN FRONTLINE

When opening the screens in the FrontLine system you will normally be presented with the tabs 'Search', 'Index' and 'Details'. The three tabs allow you to switch between the various screen components. (See Fig. 13)

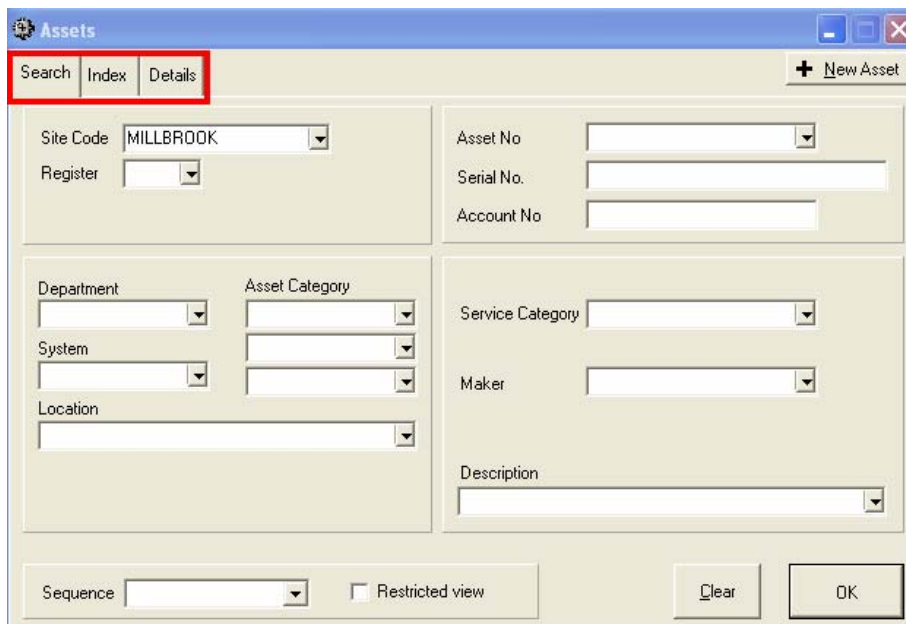


Fig 13

Shire Systems – FrontLine System Overview



The **Search** tab (See Fig. 14) allows you to directly locate the records you will see on the detail screen, by entering search criteria. Leaving this "blank" and **clicking OK** will display the whole **Index** showing the data in a spreadsheet type view.

Fig. 14

The **Index Tab** displays your selection in a “**spreadsheet**” type view, offering one-line entries for each record (See Fig. 15). To see a record in detail, highlight it with either the mouse or cursor key and select the **Details Tab**

| Site Code | Register | Asset No | Description (line 1) | Description (line 2) |
|-----------|----------|-------------|-------------------------------------|----------------------|
| MILLBROOK | EQUI | AIRCON | Air conditioning unit | |
| MILLBROOK | EQUI | ASTRA VAN | Site services vehicle | |
| MILLBROOK | EQUI | BAND-01 | Bandsaw in Workshop | Startrite H 250M |
| MILLBROOK | EQUI | BOIL-01 | Boiler 1 | |
| MILLBROOK | EQUI | BOIL-02 | Boiler 2 | |
| MILLBROOK | EQUI | BOIL-03 | Boiler 3 | |
| MILLBROOK | EQUI | BOILERHOUSE | Boiler House - Containing 3 boilers | |
| MILLBROOK | EQUI | COMP-120 | Compressor - Hydrovane 120 Pump | |
| MILLBROOK | EQUI | COMP-200 | Compressor - Atlas Copco 200 | |
| MILLBROOK | EQUI | COMPCABLE | Computer Cabling Network | (Excludes Termi |
| MILLBROOK | EQUI | COOL-01 | Air After Cooler | Denco Model D. |
| MILLBROOK | EQUI | CUBD-01 | Distribution Cubicle | |
| MILLBROOK | EQUI | DRILL-01 | Drill - Pillar | Brown & Sharp |
| MILLBROOK | EQUI | DRILL-02 | Drill - Richmond | |
| MILLBROOK | EQUI | DRYA-01 | Air Dryer | Deltech Model . |
| MILLBROOK | EQUI | FAN-01 | Extractor Fan | |
| MILLBROOK | EQUI | GRIND-01 | Grinder - MultiDiameter | Cincinatti |

Fig. 15

Shire Systems – FrontLine System Overview



The **Details Tab** will show you the data held against that individual record. The record may have further information that you might wish to view via the additional tabs & buttons (shown on this screen highlighted in **green** and **blue**). (See Fig. 16)

Assets at MILLBROOK: COMP-120 Compressor - Hydrovane 120 Pump

Search | Index | **Details** | **More About...** | ASSET

Site Code: MILLBROOK | Asset No: COMP-120 | Department: PRODUCTION | Asset Category: HEATING

Description: Compressor - Hydrovane 120 Pump | System: | COMPRESSOR

Location: UNIT 3/PRESS HALL | Position: | Service Category: COMPRESS

Register: EQUI

Eqpt/Task Details | Notes | Supplier/Service | Safety | Meter / Faults | Documents

Status: | **TASKS**

| Task | Freq | Unit | Last | Next | Hold | PM | Pl |
|-----------|------|------|----------|----------|------|----|----|
| COMP-10w | 10 | W | 26/01/04 | | H | Y | F |
| COMP-1200 | | | 08/05/03 | | | Y | |
| COMP-2000 | | | 17/12/02 | | | Y | |
| COMP-4w | 4 | W | 06/09/04 | | | Y | F |
| PAT | 6 | M | 01/01/04 | 30/06/04 | | N | V |

MOTOR: Brook Crompton
RATING: MCR INSUL CLASS: B DESIGN: 40XZ

Fig. 16

Shire Systems – FrontLine System Overview



The series of screens below show you the common navigation and command buttons used throughout the FrontLine products.

The screenshots illustrate the following navigation and command buttons:

- GO TO FIRST RECORD**: Located at the top of the navigation bar.
- GO BACK ONE RECORD**: Located at the top of the navigation bar.
- GO FORWARD ONE RECORD**: Located at the top of the navigation bar.
- GO TO LAST RECORD**: Located at the top of the navigation bar.
- INSERT A NEW RECORD**: Located at the top of the navigation bar.
- DELETE A RECORD**: Located at the top of the navigation bar.
- SAVE CHANGES**: Located at the top of the navigation bar.
- CANCEL CHANGES**: Located at the top of the navigation bar.
- REFRESH SCREEN**: Located at the top of the navigation bar.

The form fields shown in the screenshots include:

- Site: SHIRE
- Client: [Dropdown]
- Site Type: Office
- Phone No.: 023 80 224111
- Fax No.: 023 80 228475
- Name: Shire Systems Ltd
- Address: 1 Mountbatten Business Centre, 16 Millbrook Road East, Southampton, Hants
- Postcode: SO15 1HY
- Contact: Chris Lee, Title: Mr
- Job Title: Sales
- Email Address: chris.lee@shiresystems.co.uk